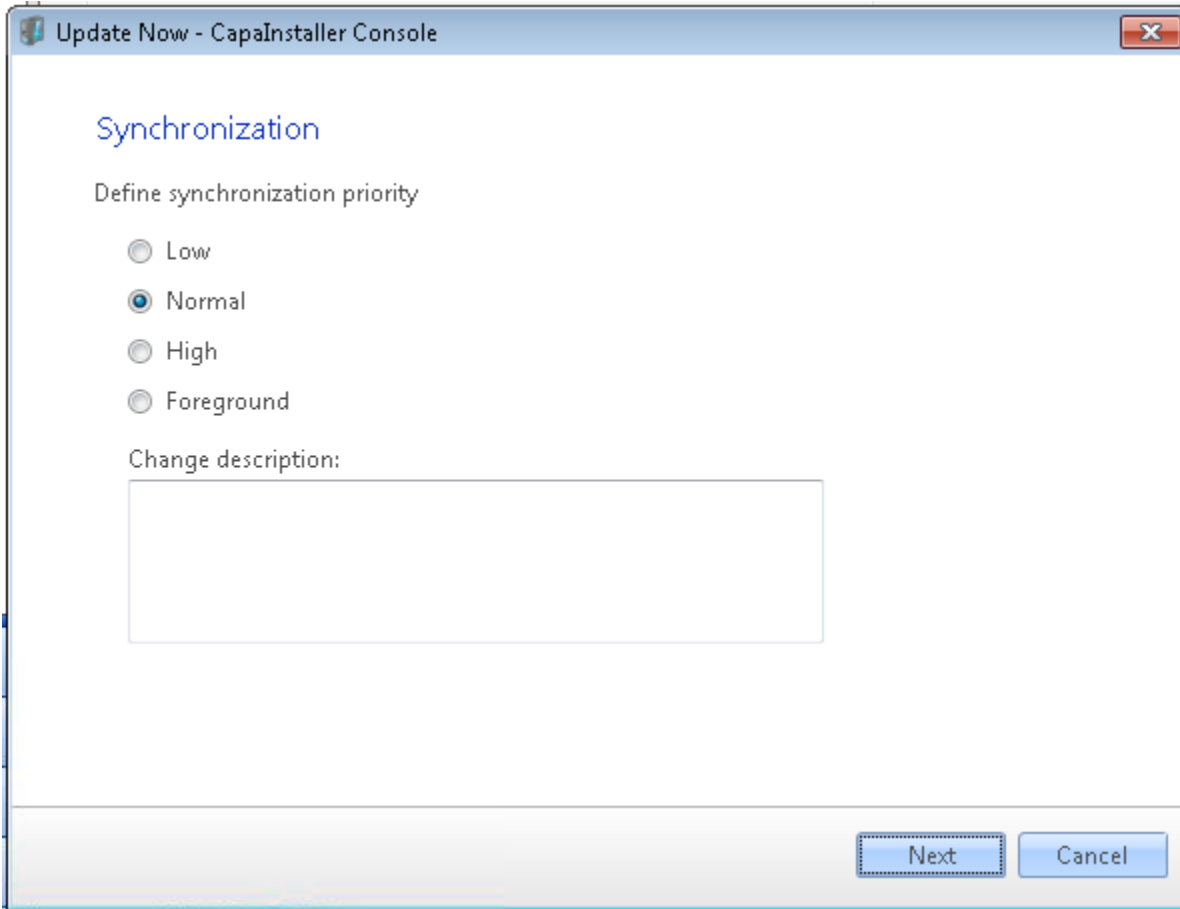


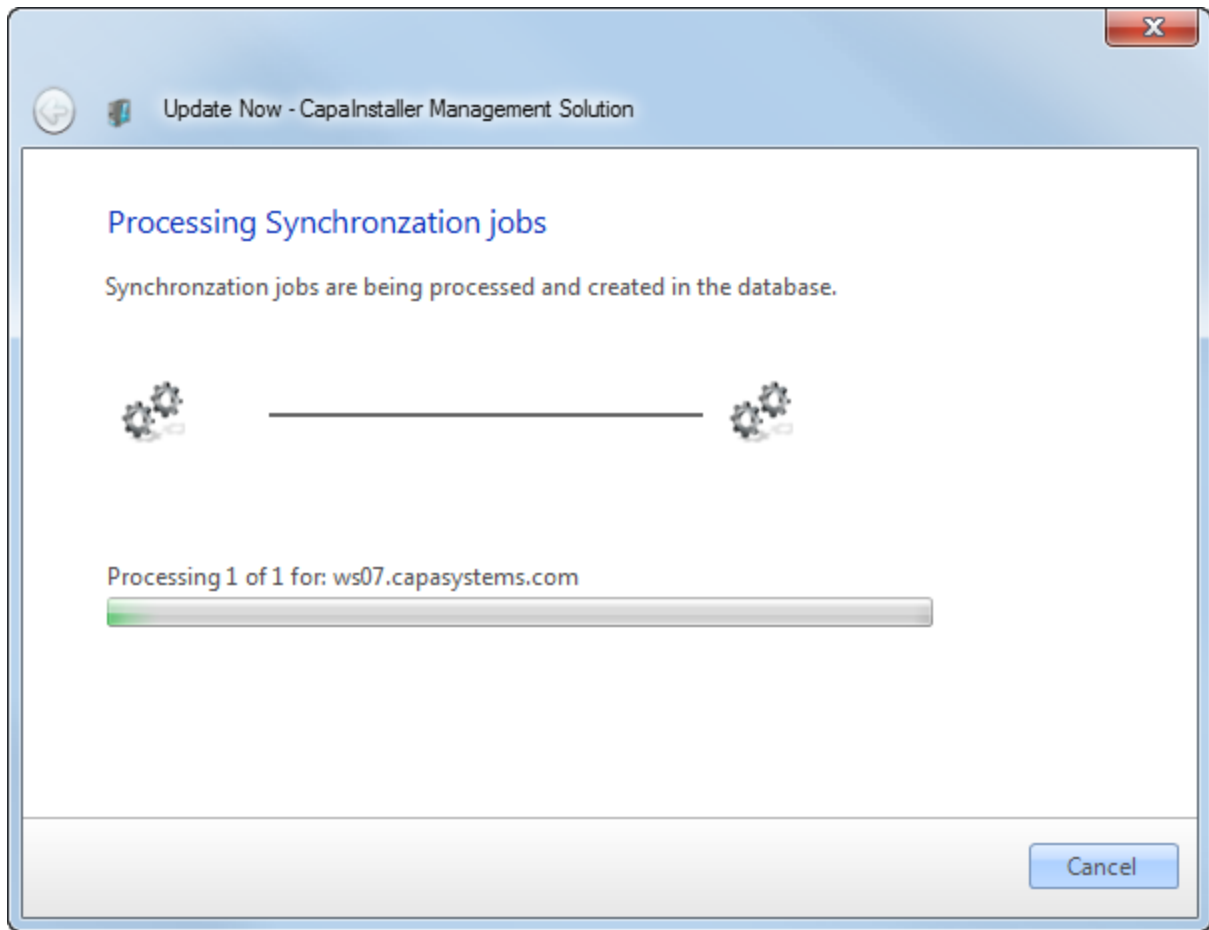
Update now

Introduction

Set the priority for synchronizations jobs. Follow the 3 steps.



Element	Description
Low	Transfers the job in the background with a low priority. Background transfers use the idle network bandwidth of the client to transfer files. This is the lowest background priority level.
Normal	Transfers the job in the background with a normal priority. Background transfers use the idle network bandwidth of the client to transfer files. This is the default priority level.
High	Transfers the job in the background with a high priority. Background transfers use the idle network bandwidth of the client to transfer files. This is the highest background priority level.
Foreground	Transfers the job in the foreground. Foreground transfers compete for network bandwidth with other applications, which can impede the user's network experience. This is the highest priority level.





Update Now - CapaInstaller Management Solution

Completed

Synchronization Jobs for 1 Management Server(s) was created.



I'm done!

Close the wizard

Close